

LUMAIRE

WEST PALM BEACH

Residence

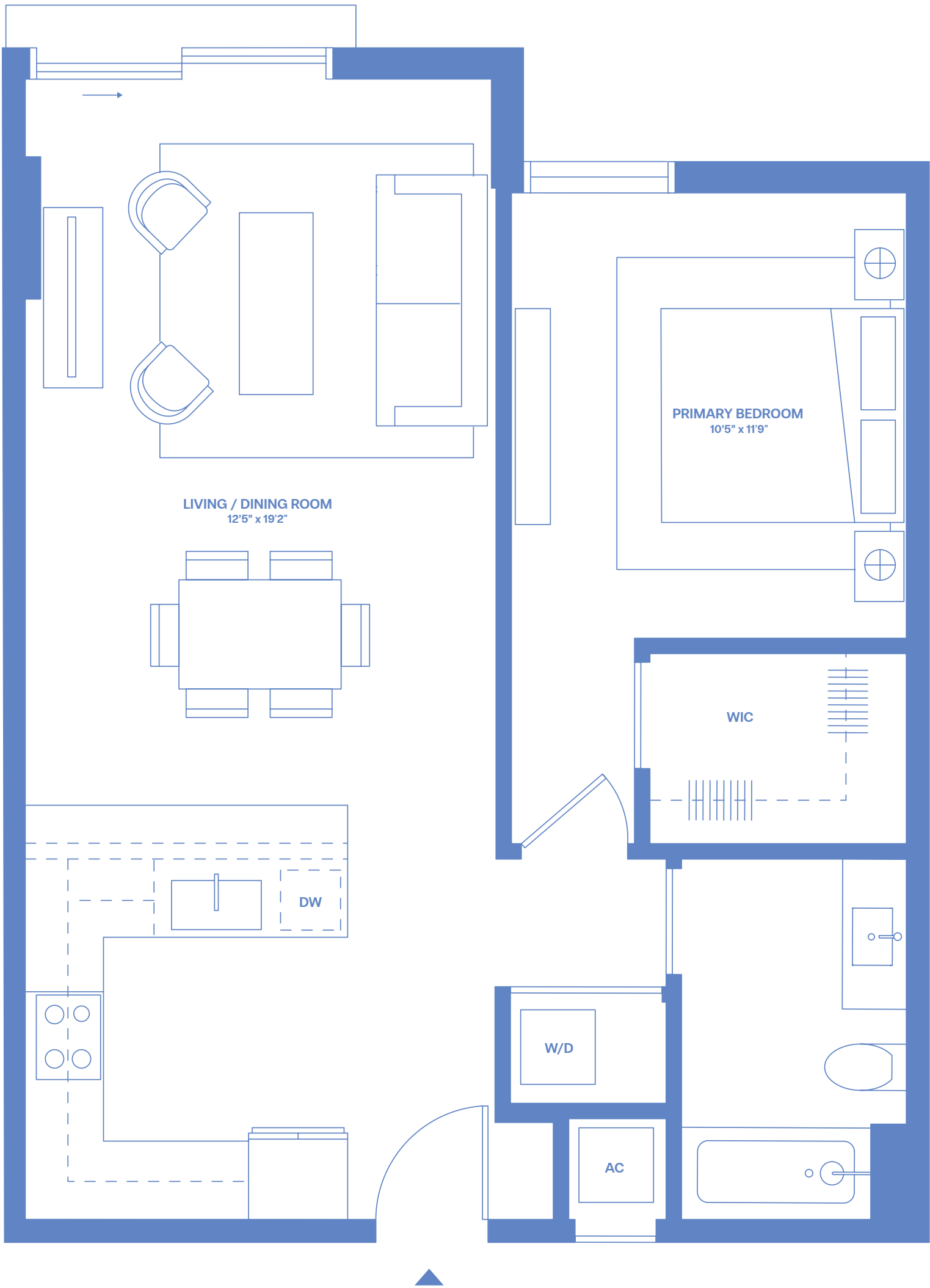
11

Floors




9-23

1 BEDROOM
1 BATHROOM
JULIET BALCONY

INTERCOASTAL / ATLANTIC OCEAN



DouglasElliman
Development Marketing

   This floor plan is for illustrative purposes only. Terraces available on select units only. All dimensions and square footage are approximate and may vary. Variations in layout may occur. Features and specifications are subject to change. Pricing and fees are subject to change without notice. Additional charges may apply for building services, benefits, and amenities, which are subject to change. Benefits and services are not essential, required, or ancillary services provided by the landlord. All residential units are rented unfurnished. Lumaire adheres to all Fair Housing laws and does not discriminate based on race, color, sex, religion, national origin, familial status, or disability. Equal Housing Opportunity. Handicap Accessible.

